



ELBA
Creating Possibilities in East London

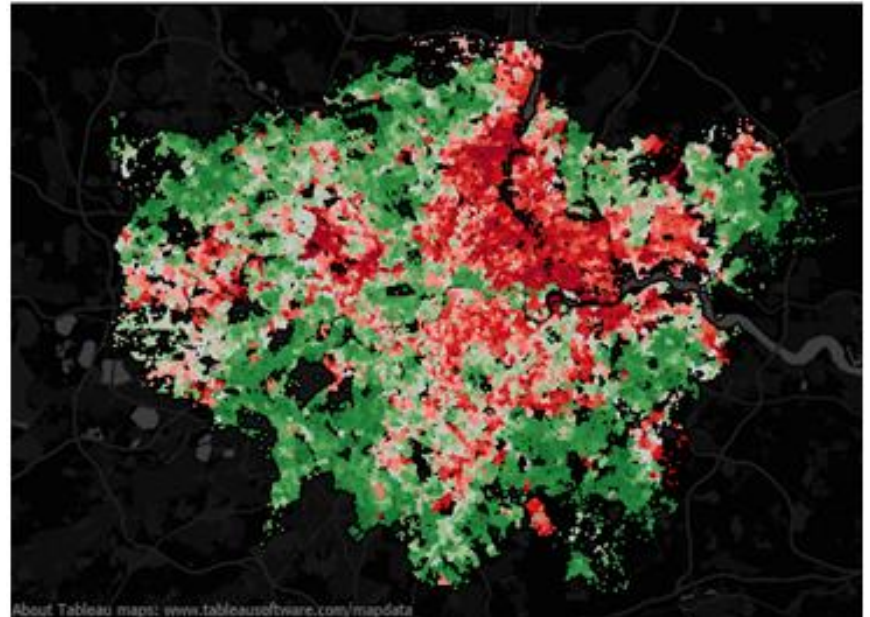


PLACING ETHNIC MINORITIES INTO EMPLOYMENT WHAT WORKS?

- Social mobility charity est. 1989
- Community, education and employment

1. Hackney
2. Newham
3. Tower Hamlets

Department for Communities and Local Government



This is ELBA



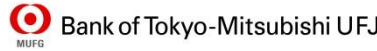
Morgan Stanley



Media & IT



Financial



Professional services



Regeneration, housing & facilities



Linklaters



Legal



Public



Academic



Travel and food





ELBA in numbers

- 12,000 volunteers every year
- 112,000 hours of support every year
- 48,000 direct beneficiaries in the community
- 280 local organisations supported
- 800+ local people into work every year



Opportunities

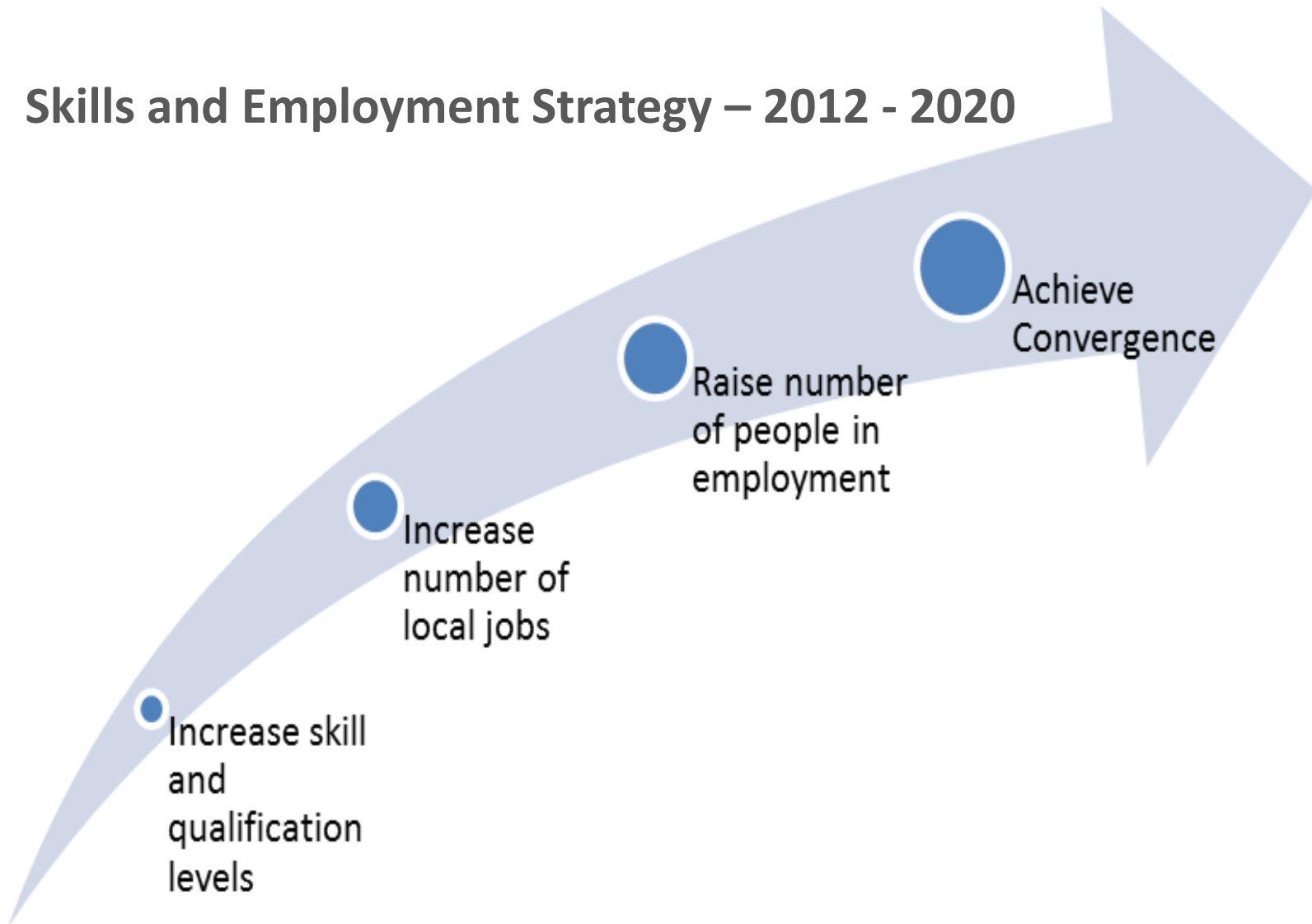
- Economy forecast to grow £7bn in 20 years
- Development
 - Asian Business Park (ABP), 18,000 jobs
 - Silvertown Partnership, 10,000 jobs
 - Wood Wharf, 80,000 jobs
 - International Quarter, 30,000 jobs



ELBA

Creating Possibilities in East London

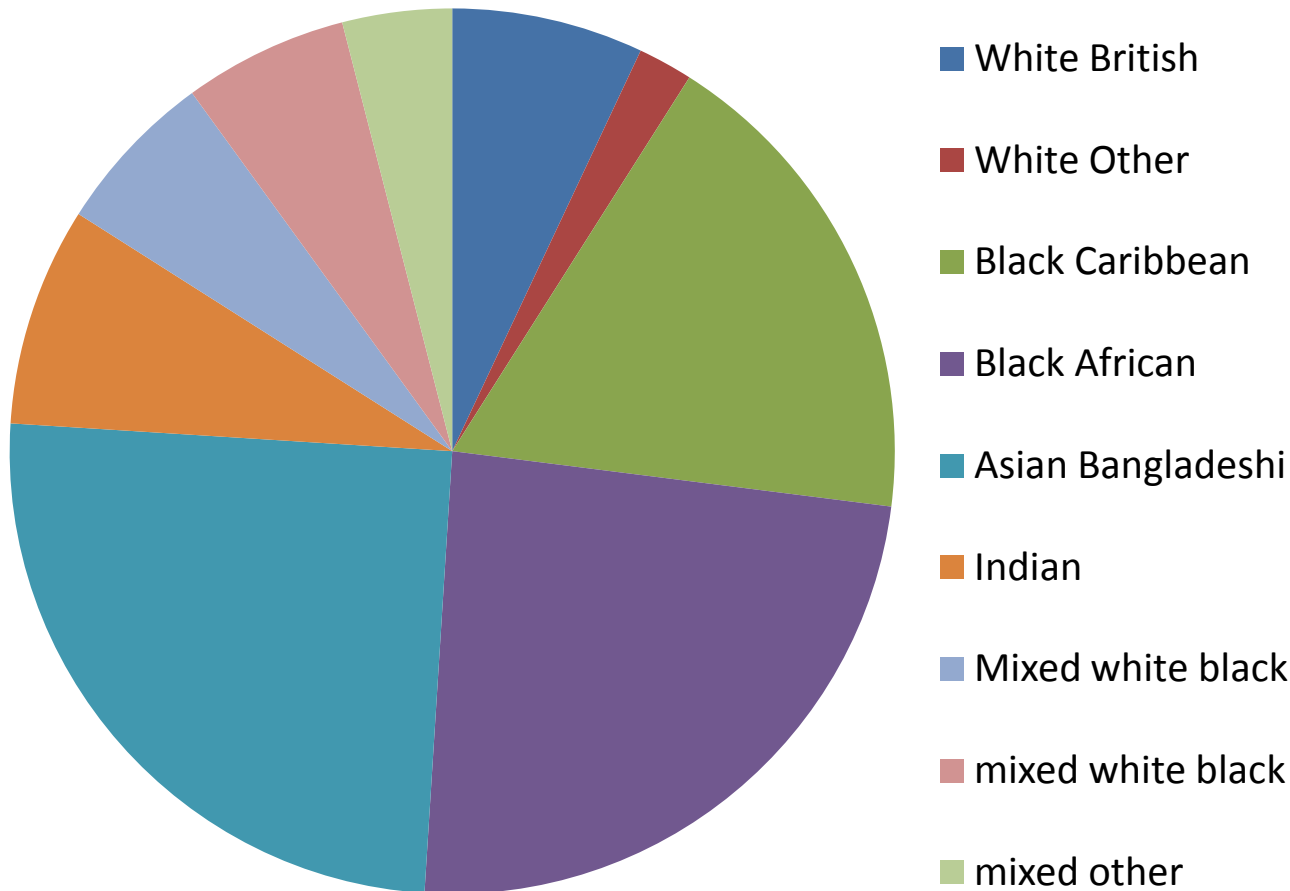
Skills and Employment Strategy – 2012 - 2020





ELBA
Creating Possibilities in East London

ELBA job placements by ethnicity 13/14

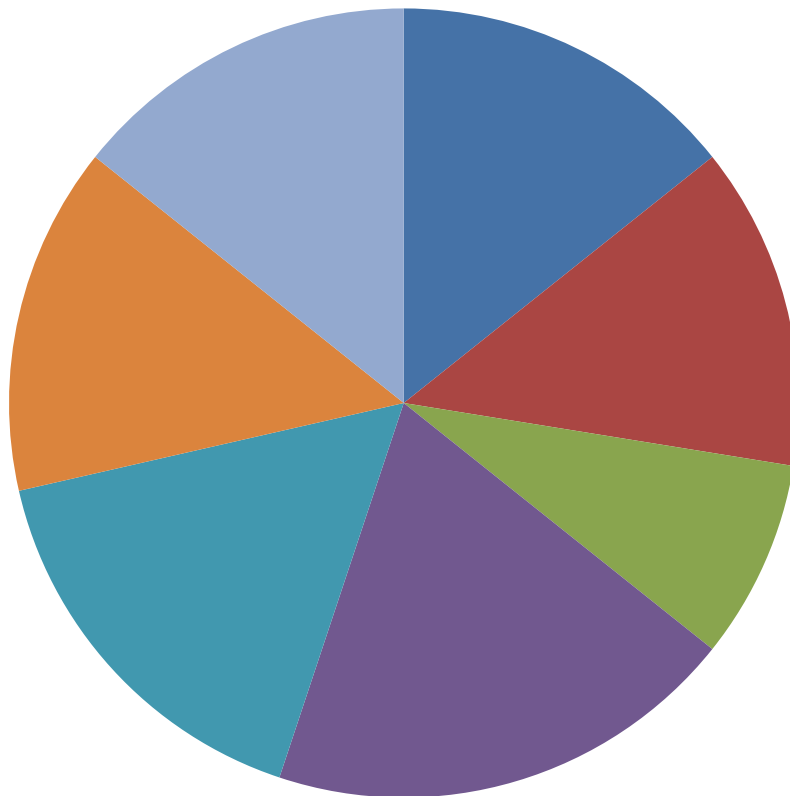


91%
BAME



ELBA
Creating Possibilities in East London

ELBA job placements by role 13/14



■ Office & IT

■ Graduate Careers

■ Trades

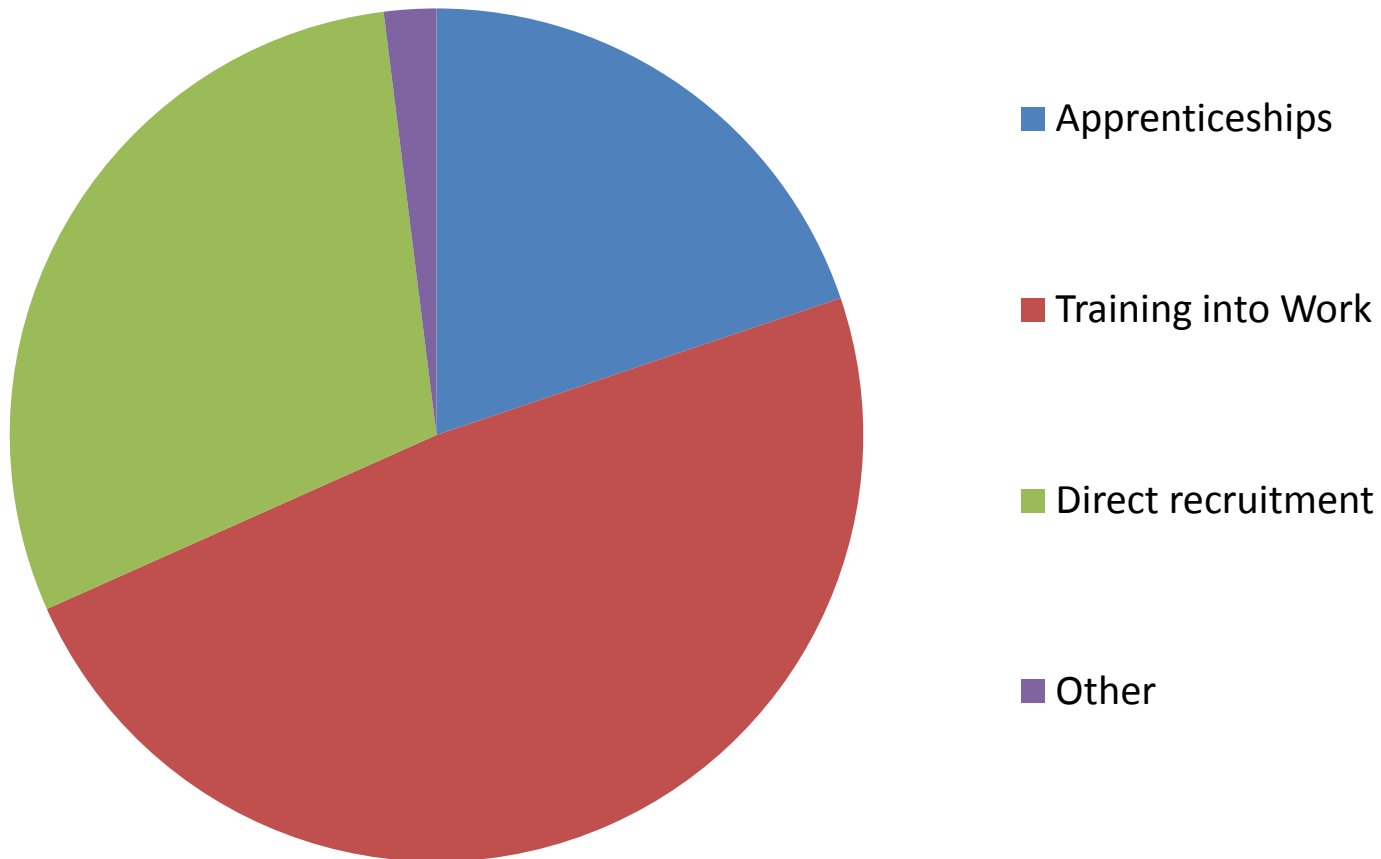
■ Cleaning

■ Catering

■ Security

■ Catering

ELBA job placements by route 13/14



Employer engagement: What works for us?

- Flexibility
- Business case
- Positioning (diversity and inclusion)
- Speed and efficiency
- Partnership screening
- Hiding the wiring



ELBA
Creating Possibilities in East London

QUESTIONS